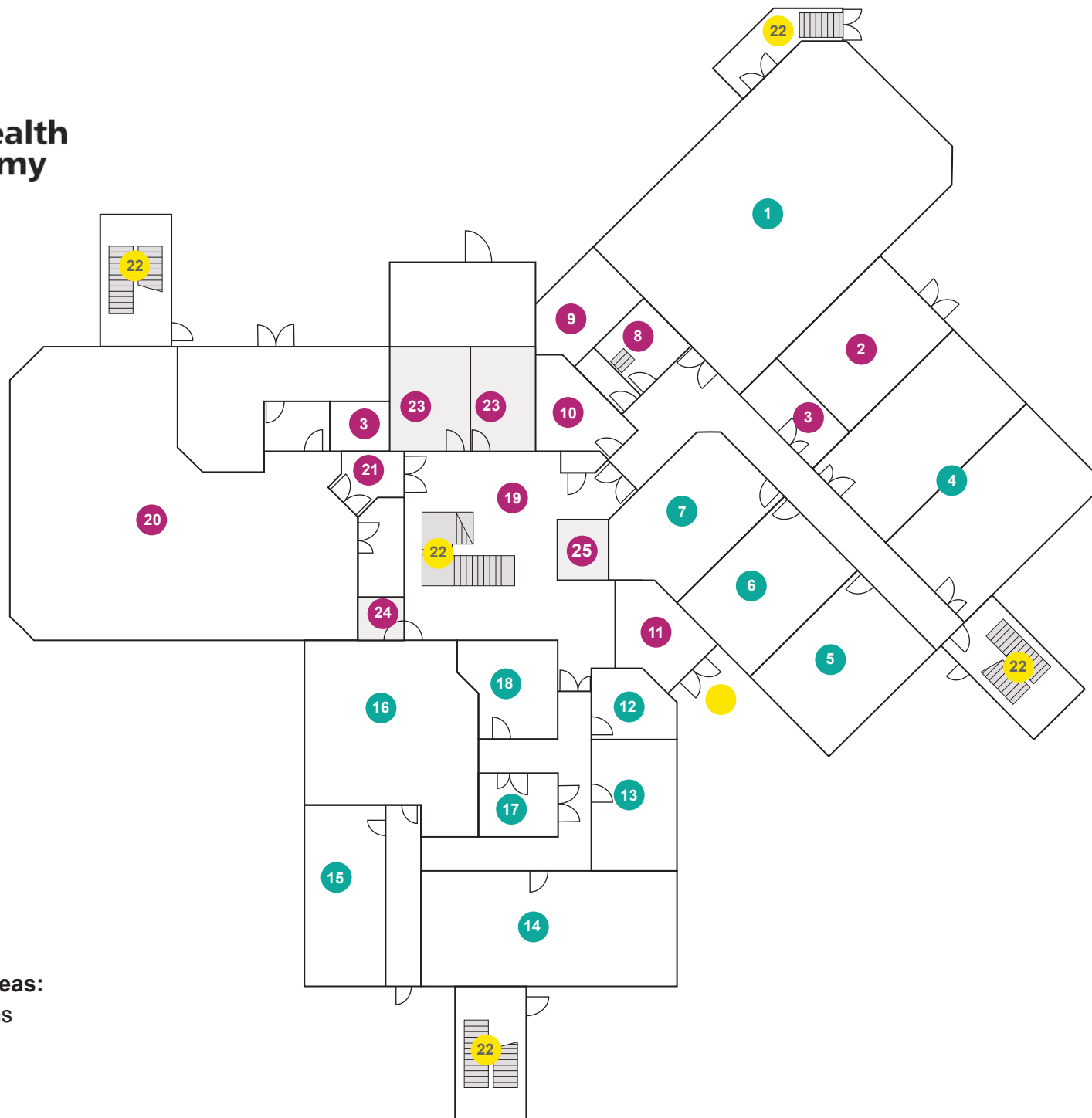


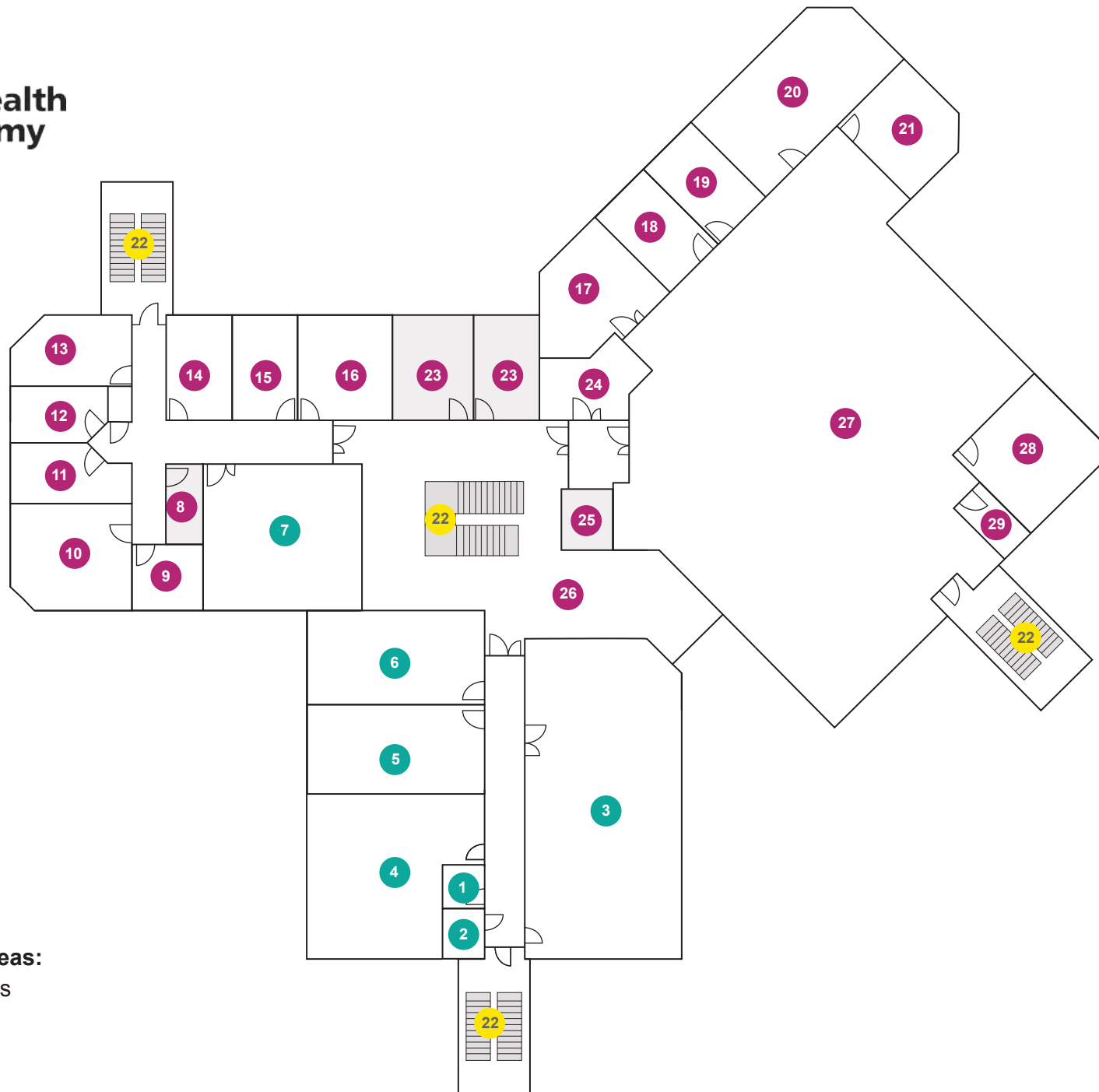
## Education Centre 1 (Preston) Floor Plans



1. Lecture Hall
2. Plant room
3. Store
4. Lecture Room 1
5. Seminar Room 3
6. Seminar Room 2
7. Media Studio
8. Projection Room
9. Equipment Room
10. Print Room
11. Entrance Lobby
12. Meeting Room 3
13. Meeting Room 2
14. Seminar Room 5
15. Meeting Room 1
16. Seminar Room 4
17. Domestics Room
18. Reception
19. Entrance Foyer
20. Dining Area
21. Lobby
22. Staircase
23. WC
24. Disabled WC
25. Lift

**Colour Code for Areas:**

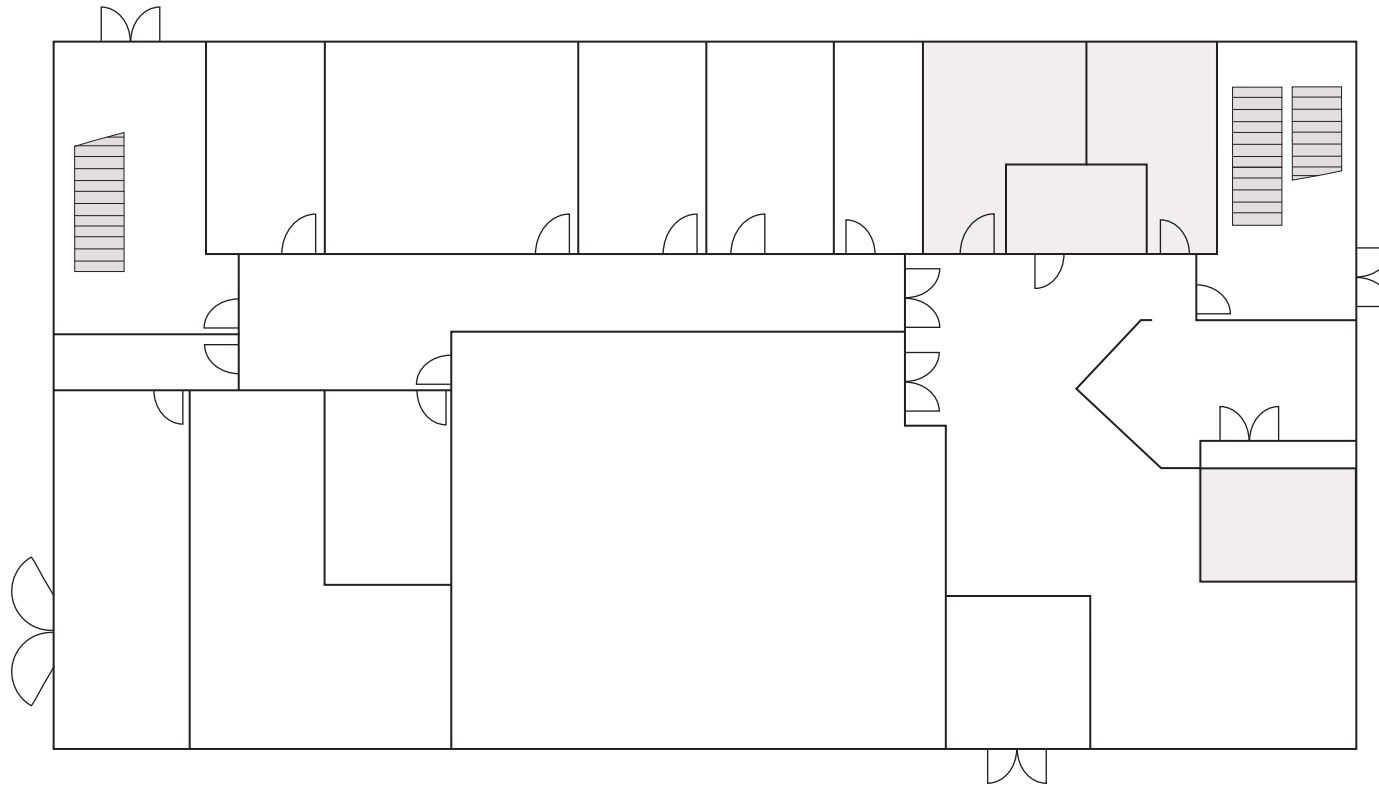
- Education Rooms
- Amenities
- Fire Exit



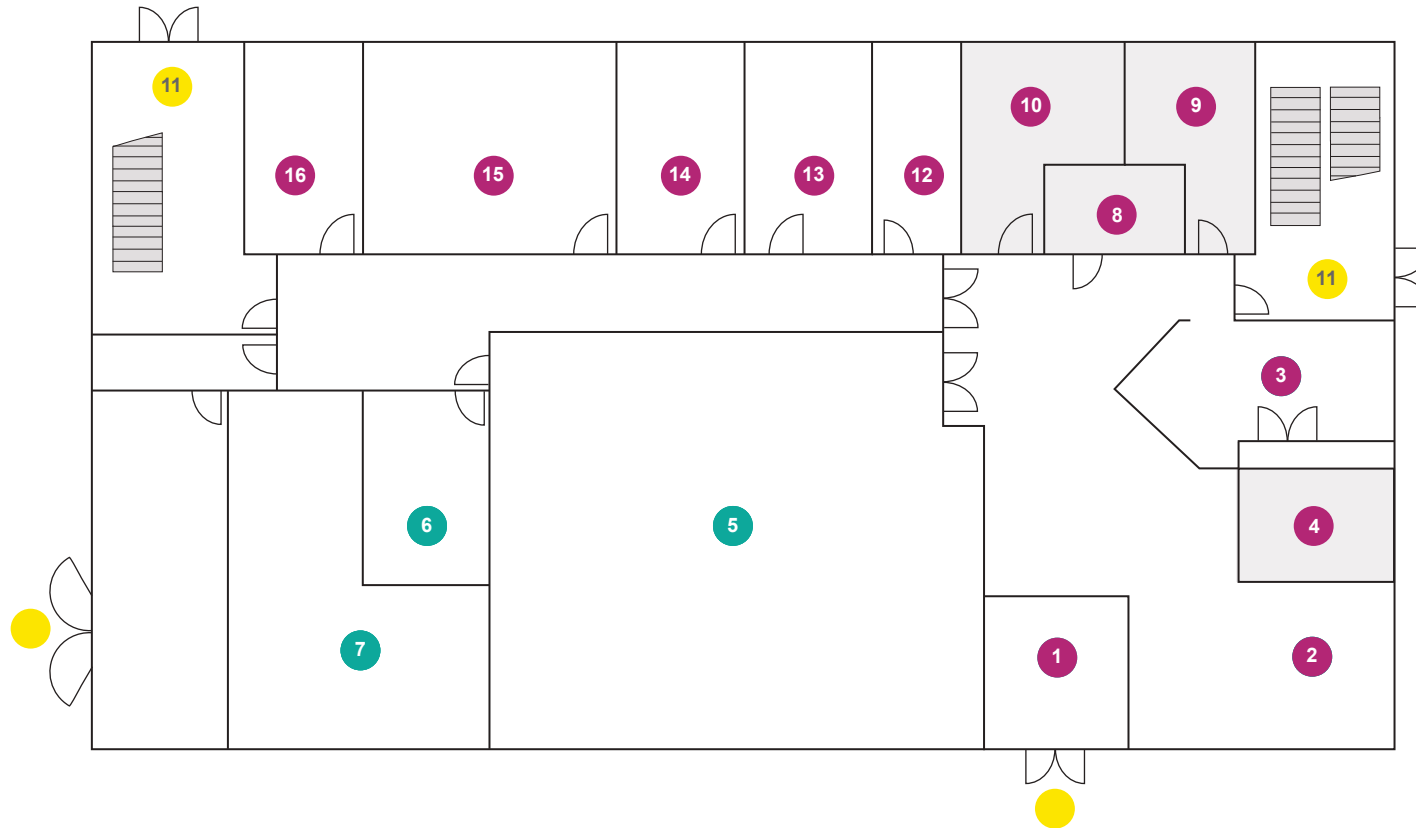
1. 1:1 Room A
2. 1:1 Room B
3. Lecture Room 3
4. Seminar Room 9
5. Seminar Room 8
6. Seminar Room 7
7. Seminar Room 6
8. Staff Kitchen
9. Office
10. Office
11. Office
12. Office
13. Office
14. Office
15. Office
16. Office
17. Library Office
18. Library Office
19. Library Office
20. Library IT Suite
21. Library Office
22. Staircase
23. WC
24. Equipment Store
25. Lift
26. Mezzanine Foyer
27. Library
28. Quiet Room
29. Study Room

**Colour Code for Areas:**

- Education Rooms
- Amenities
- Fire Exit



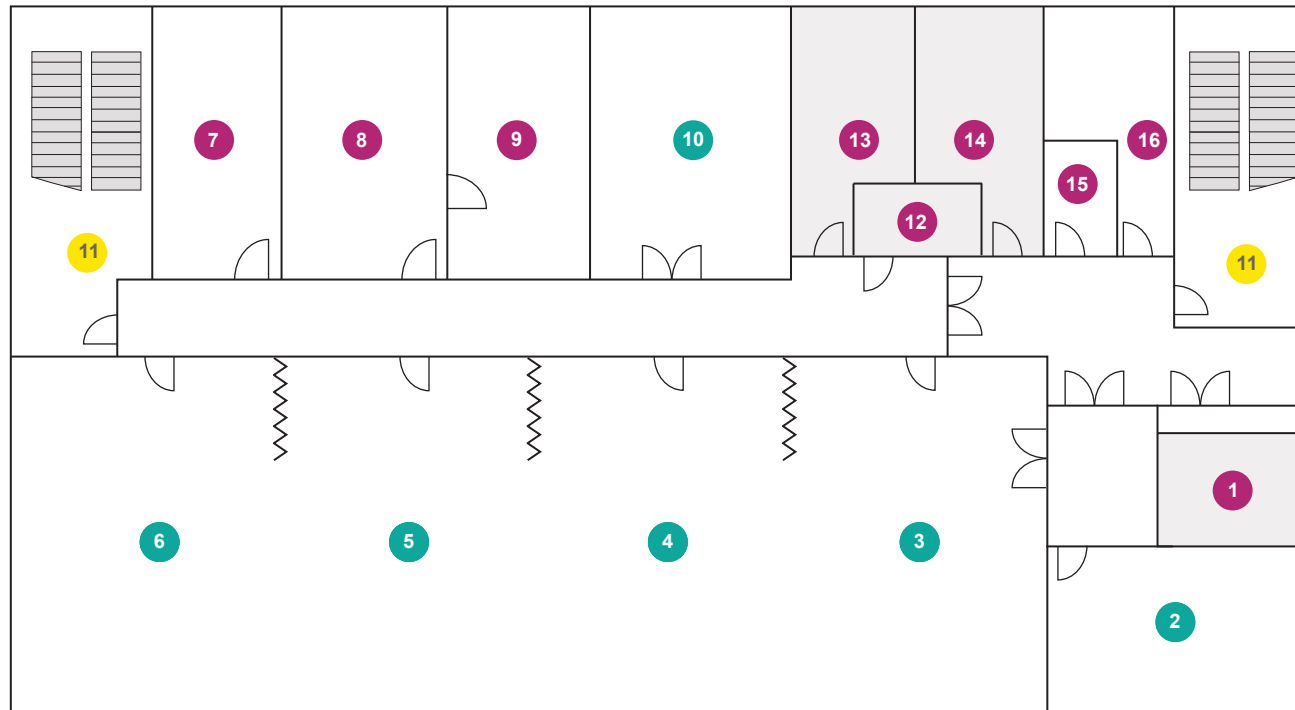
## Education Centre 2 (Preston) Floor Plans



1. Entrance
2. Waiting Area
3. Reception
4. Lift
5. Lecture Room 2
6. Printer & Store room
7. Nursing & AHP Clinical Skills Office
8. Disabled WC
9. Female WC
10. Male WC
11. Stairs
12. Clinical Lead Educator
13. Communication & Ethics Team
14. Nursing & AHP Skills Leads
15. Nursing & AHP Skills Team
16. Head of Clinical Skills Education

**Colour Code for Areas:**

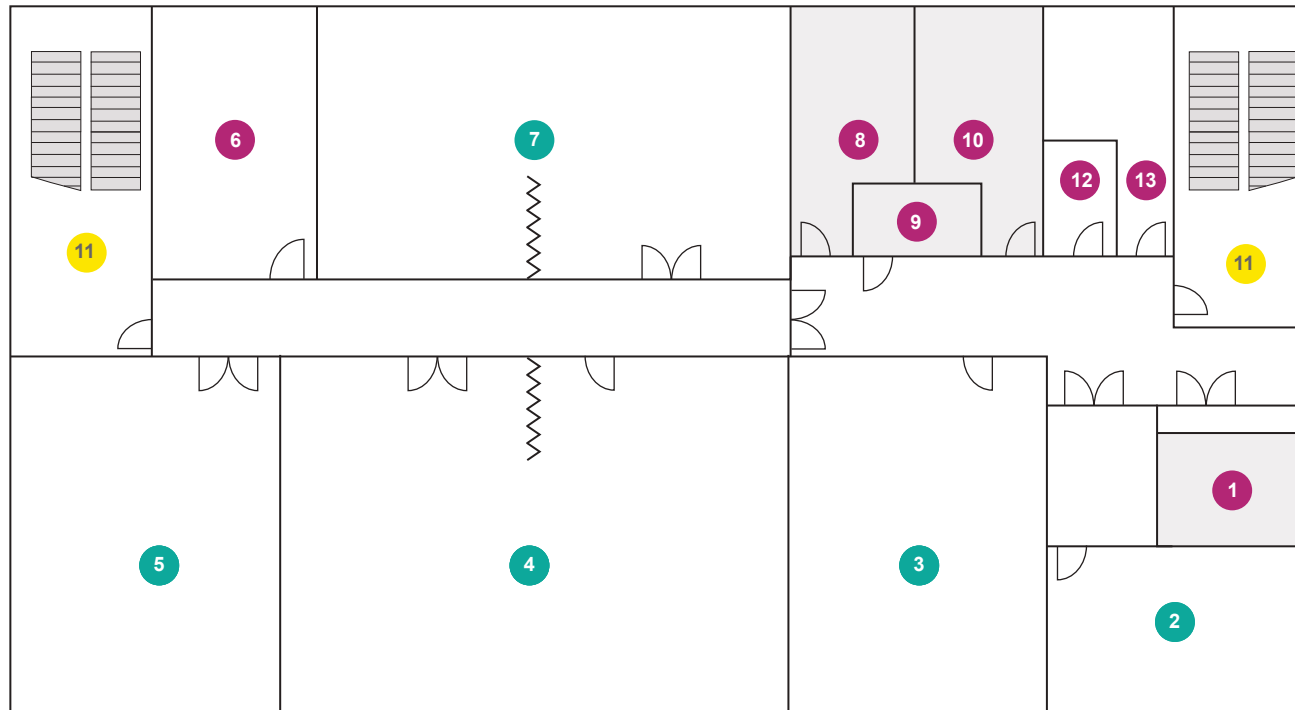
- Education Rooms
- Amenities
- Fire Exit



1. Lift
2. Seminar Room11/Office
3. Skills Lab 5
4. Skills Lab 4
5. Skills Lab 3
6. Skills Lab 2
7. Clinical Skills Office
8. Store Room
9. Skills Preparation
10. Skills Lab 6
11. Stairs
12. Disabled WC
13. Male WC
14. Female WC
15. Store Room
16. Store Room

**Colour Code for Areas:**

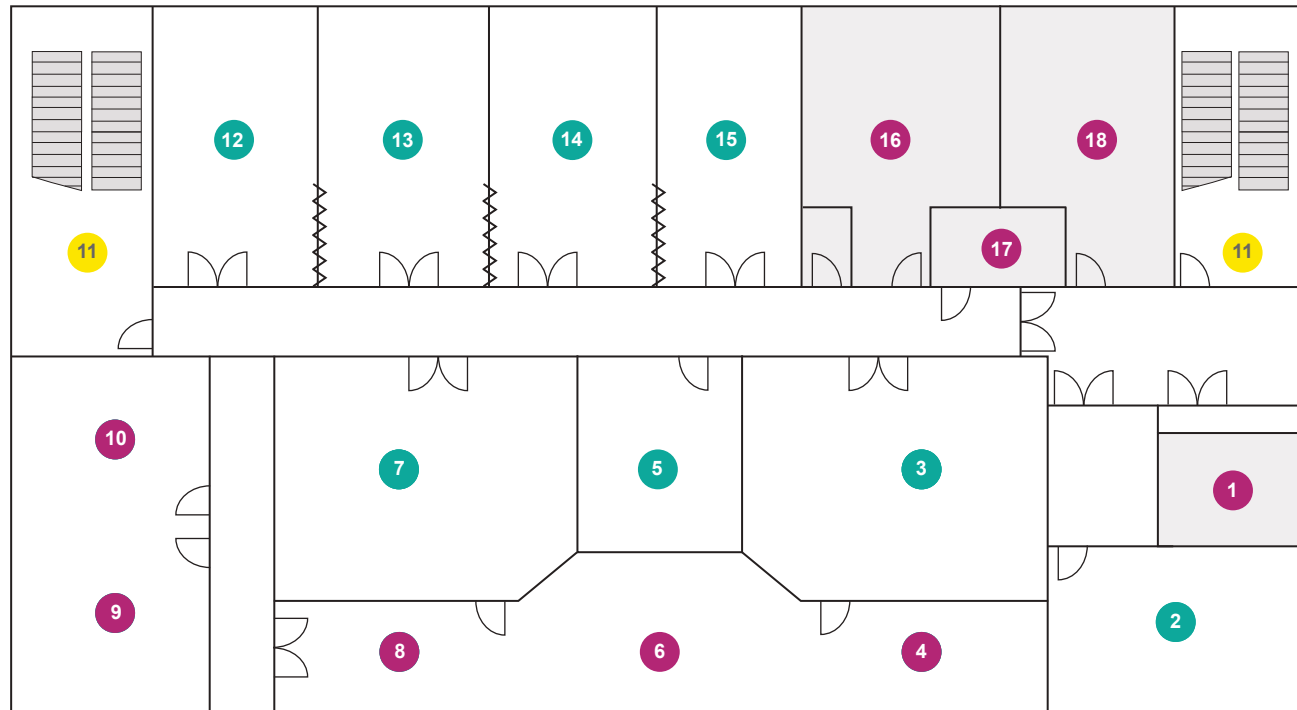
- Education Rooms
- Amenities
- Fire Exit



1. Lift
2. Seminar Room 17
3. Student Common Room
4. Seminar Room 16
5. Seminar Room 15
6. Clinical Skills Office
7. Seminar Room 14
8. Male WC
9. Disabled WC
10. Female WC
11. Stairs
12. Store Room
13. Store Room

**Colour Code for Areas:**

- Education Rooms
- Amenities
- Fire Exit

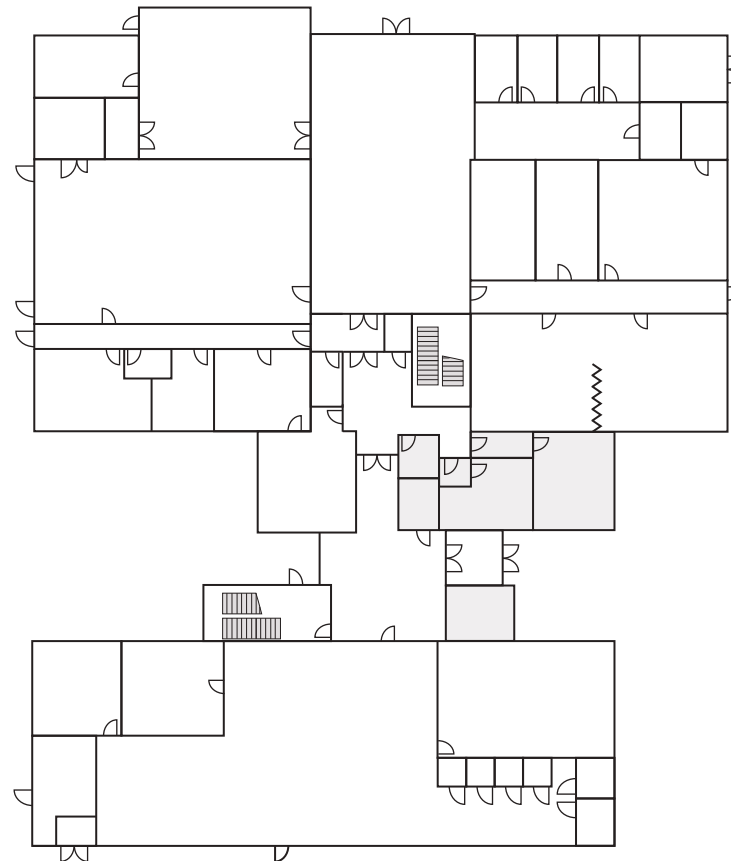


1. Lift
2. Seminar Room 18
3. Simulation Training B
4. AV Store
5. Simulation Debrief Room
6. Control Room
7. Simulation Training A
8. Store and Set up
9. Simulation Office
10. Resuscitation Office
11. Stairs
12. Resuscitation Training 1D
13. Resuscitation Training 1C
14. Resuscitation Training 1B
15. Resuscitation Training 1A
16. Male WC
17. Disabled WC
18. Female WC

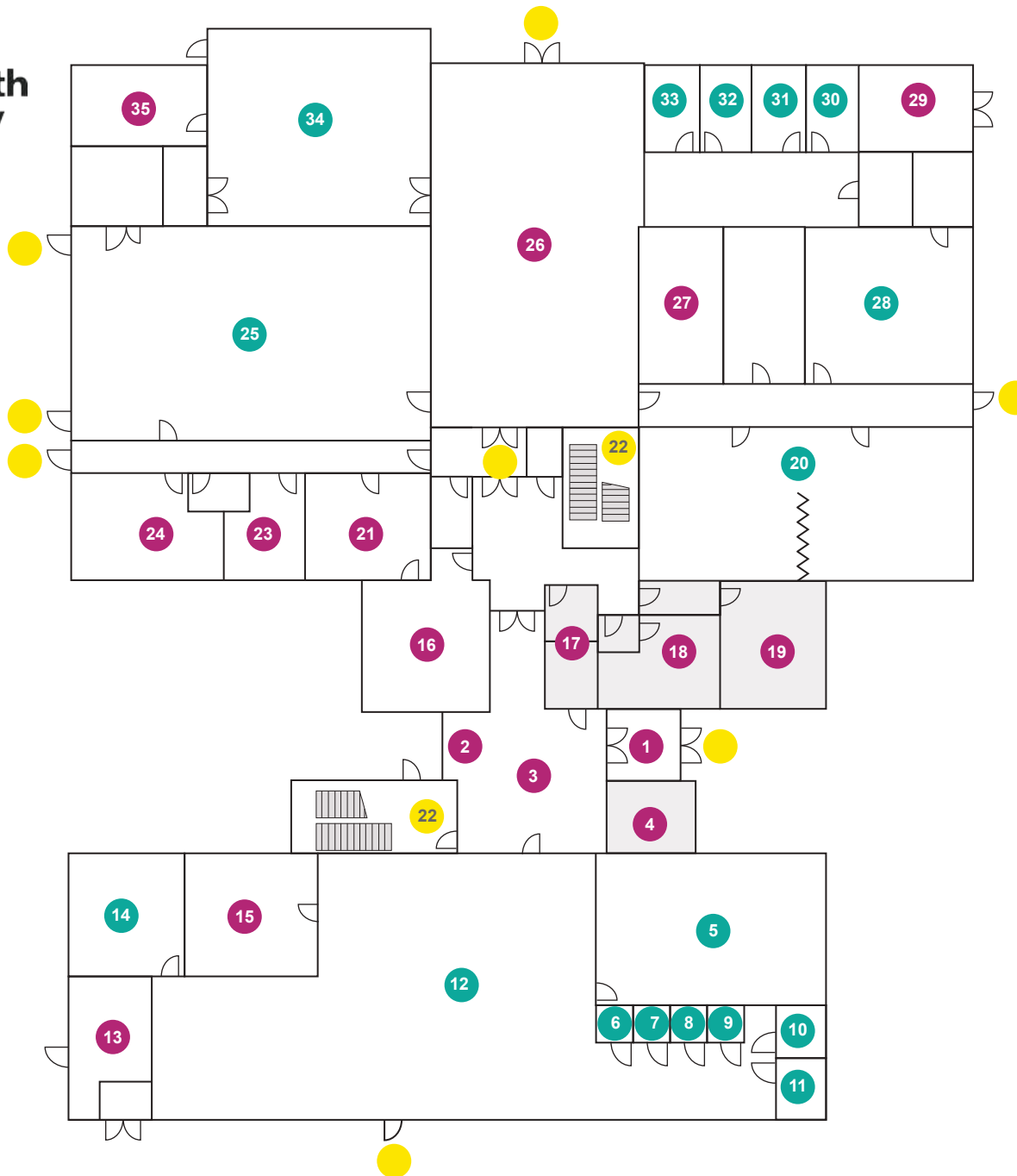
**Colour Code for Areas:**

- Education Rooms
- Amenities
- Fire Exit





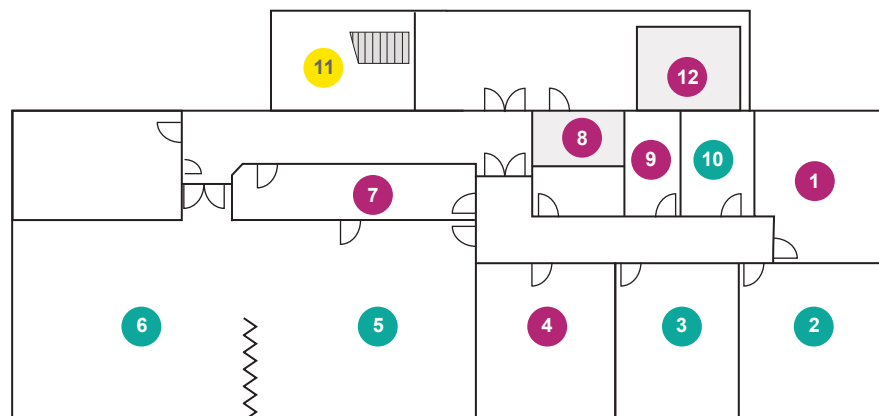
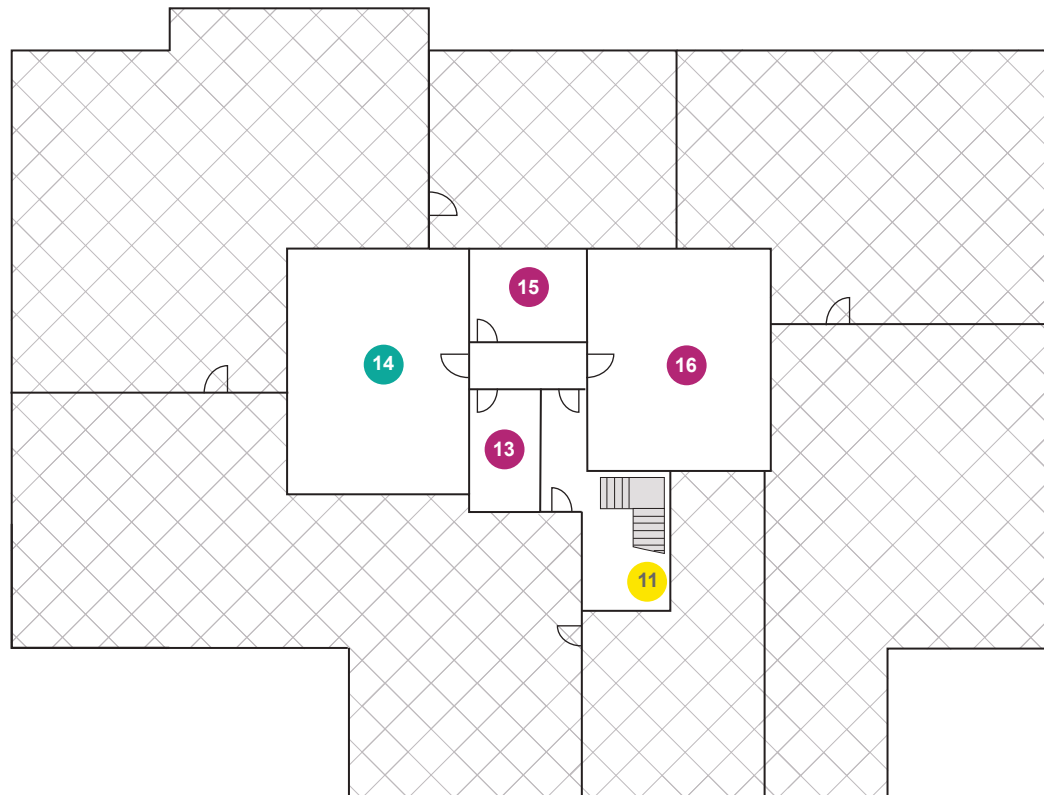
## Education Centre 3 (Chorley) Floor Plans



- |                        |                         |
|------------------------|-------------------------|
| 1. Lobby               | 19. Female WCs          |
| 2. Reception           | 20. Seminar Room A1     |
| 3. Main Entrance       | 21. Hot Desk Office     |
| 4. Lift                | 22. Staircase           |
| 5. IT Suite            | 23. Office              |
| 6. Study Pod           | 24. Office              |
| 7. Study Pod           | 25. Lecture Hall        |
| 8. Study Pod           | 26. Dining Area         |
| 9. Study Pod           | 27. Studies Cafe        |
| 10. Study Room         | 28. Seminar Room B      |
| 11. Study Room         | 29. Plant Room          |
| 12. Library            | 30. Reception Storeroom |
| 13. Plant Room         | 31. Meeting Room H      |
| 14. Health & Wellbeing | 32. Meeting Room G      |
| 15. Office             | 33. Meeting Room F      |
| 16. Office             | 34. Moving & Handling   |
| 17. Disabled WCs       | 35. Office              |
| 18. Male WCs           |                         |

**Colour Code for Areas:**

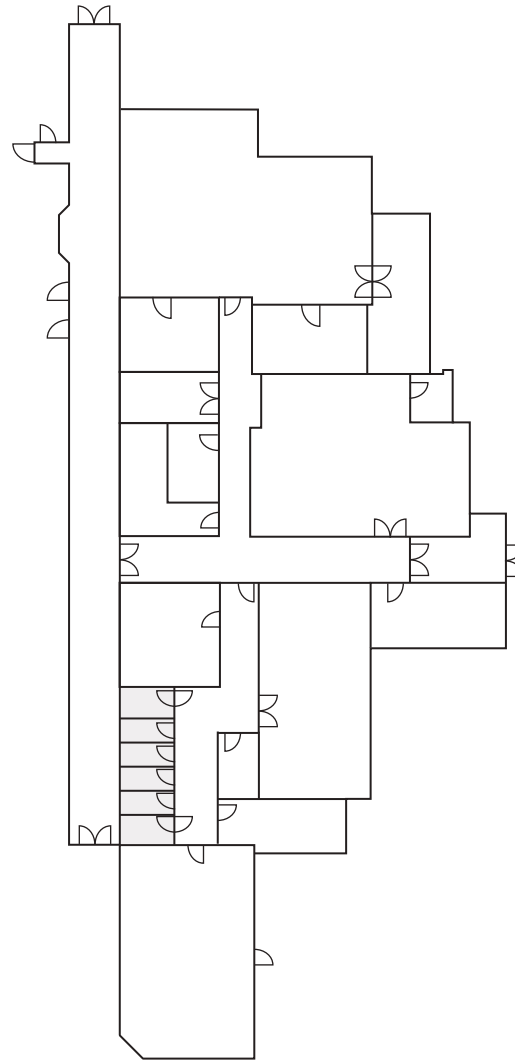
- Education Rooms
- Amenities
- Fire Exit



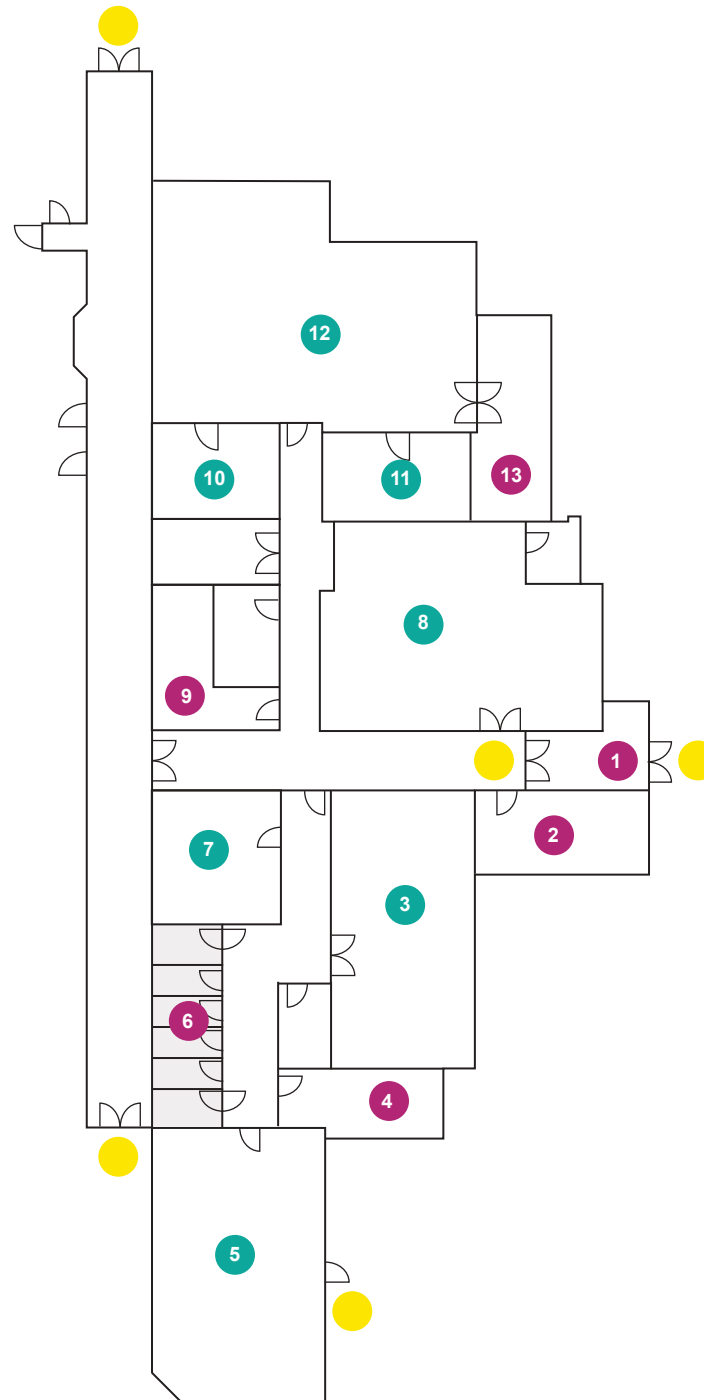
**Colour Code for Areas:**

- Education Rooms
- Amenities
- Fire Exit

1. Surgical Sim Office
2. Meeting Room J
3. Student Common Room
4. Surgical Sim Storeroom
5. Skills Lab A
6. Skills Lab B
7. Wet Preparation Room
8. Disabled WC
9. Staff Kitchen
10. Quiet Room
11. Stairs
12. Lift
13. Office
14. Seminar Room D
15. Meeting Room E
16. Seminar Room C



## Life Centre (Chorley) Floor Plans



1. Entrance Lobby
2. Office
3. VR Room
4. Office
5. Multipurpose Room
6. WC's
7. Breakout Room
8. Ward Room
9. Staff Kitchen
10. Triage Room
11. X-Ray Room
12. Clinical Zone
13. New Glass Office

**Colour Code for Areas:**

- Education Rooms
- Amenities
- Fire Exit