

Your staff library news

Volume 23, Issue 1

We hope you all had a wonderful festive period. **Our normal open hours now resume.** We are open 24 hours 7 days a week but staffed Mon-Friday 9am-5pm at both RPH and CDH.

Inside this issue:

Cover - Library opening hours and competition winner

Page 2 & 3- Knowledge Share

Page 4-New books

P5- Pop up library

P6&7 - Cosy Castaway

Page 8 - Training sessions

Page 9-Janaury reading list

Page 10-Books up for grabs!

Page 11-Have your say!

Competition Winner

Late last year the E-Resources team ran a survey looking at library users and their searching habits in order to better understand and improve the services we offer.

Congratulations to [Cheryl Brennan](#) who won £30 after filling in our survey,. We would like to thank everyone who took part in the survey. We had a great response, and we are now busy processing the data. We hope this survey will help us to adapt our services to your needs going forward.

Look out for more competitions and surveys in the future to be in with a chance of winning!



Find it challenging to stay up to date with new evidence and research?

Not enough time for CPD?

Don't know where to start looking for the latest information?

Why not try using....



KnowledgeShare

Using our automated system, (KnowledgeShare) we regularly gather new reports, guidelines and research articles and email them out to local staff in short, personalised updates. We try to tell you about only the publications that will interest you. If you'd like to sign up for these, please fill in this [form](#) mentioning your professional interests (you can be as broad or specific as you like and include both clinical and non-clinical topics). We hope you'll find this service helps to make more evidence-based decisions."

Why do people like KnowledgeShare?

“I love KnowledgeShare, it supports CPD and then I forward the email alert to others!”

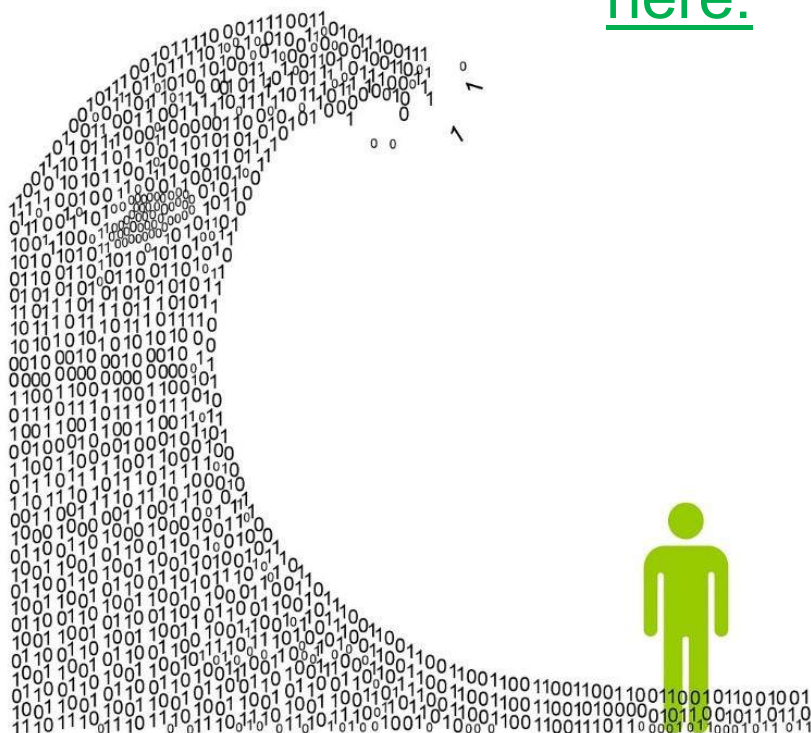
Louisa Graham

Deputy Director of Workforce and Organisation Development

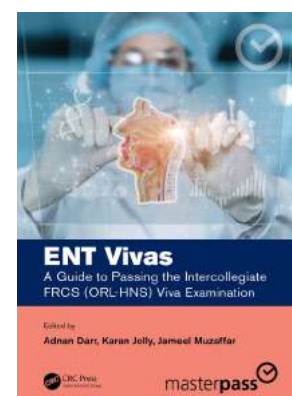
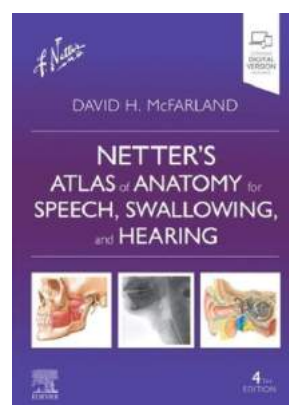
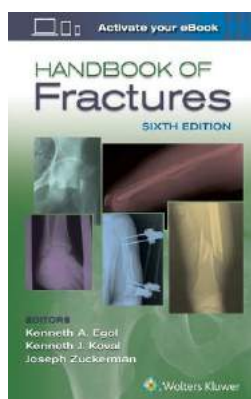
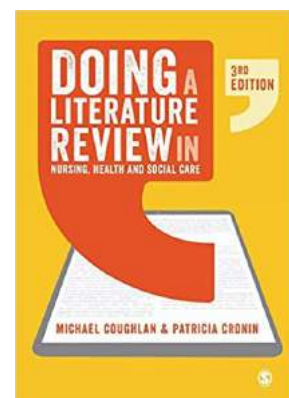
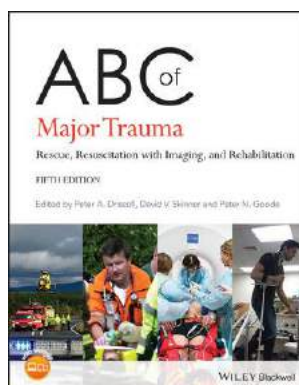
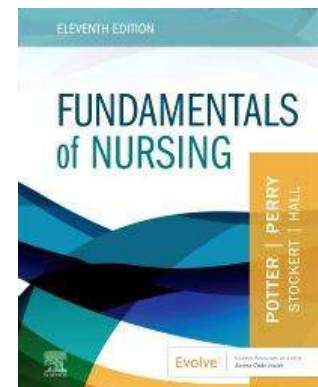
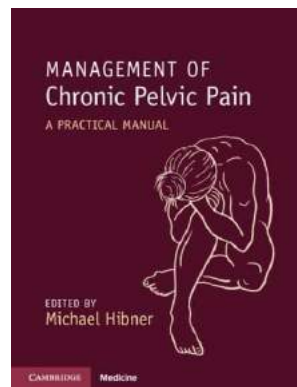
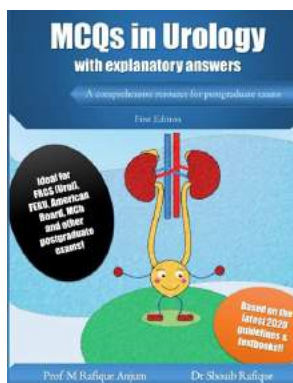
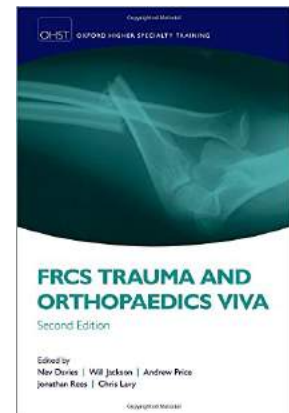
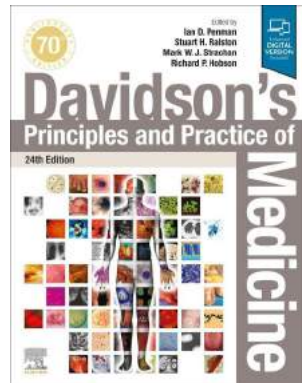
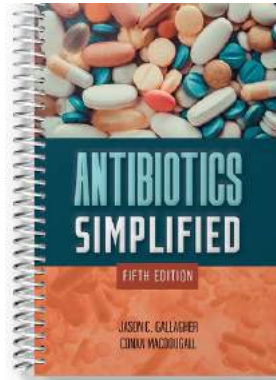
If you have any questions or want more information

- Via email library.rph@lthtr.nhs.uk
- Via phone
- Or come visit us every Wednesday lunchtime in Charters.

If you would like to sign up you can do that [here](#):



New Medical Books



Always in a rush?

Struggle to find the library ?

Haven't used us in a while and forgotten the services we offer?

Come and visit our Pop in Library

Find us in Charters every Wednesday

**When are we
there next?**

12.00pm-1.00pm

6th January

13th January

20th January

27th January



We may or may not be wearing a face mask
but don't let that put you off!

We can answer questions you may have, return/renew books, search the library catalogue, sign you up for Open Athens or Knowledge share and much more. Have a chat with us to learn more about what we can offer!

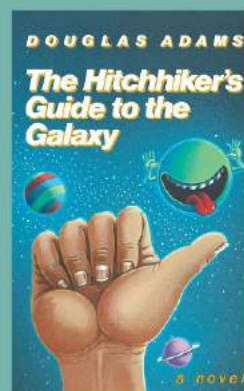
Cosy Castaway

You are in a remote cabin for the Winter. You can take 3 books: which ones do you choose? Email us at library@lthtr.nhs.uk by the end of Feb 2023 and you could win a £30 voucher of your choice!



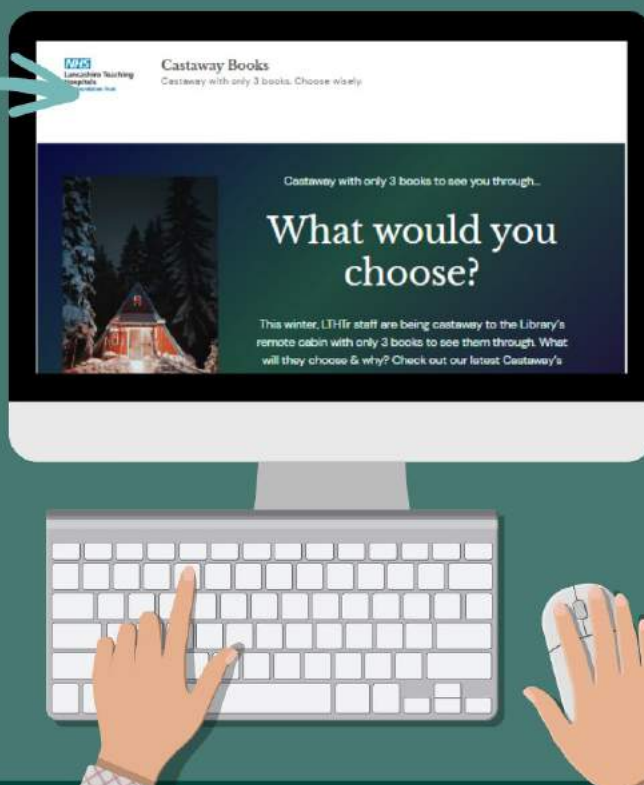
Cosy ✨ Castaway

Our latest Castaway chose these 3 books



Click the book covers to read why

Click to view the Castaway blog





Improve your knowledge of anatomy

The Library is running a series of lunchtime training sessions on Anatomy TV - the ultimate online 3D human anatomy educational resource.

Each training session will take place online via Microsoft Teams and lasts for approx. 30 minutes.

To book onto a session please email Amy.Belch@lthtr.nhs.uk.

Training dates and times are shown below:

Monday 5th December - 12pm
Friday 20th January - 1pm
Tuesday 28th February - 12pm
Monday 27th March - 1pm

Transform how you learn and teach human anatomy!



Want to have access to the world's most accurate and comprehensive digital human anatomy and physiology content?

Why not try AnatomyTV?

Throughout January Amy is running training designed specifically to help you get to grips with and fully utilise the wonderful resource that is Anatomy TV.

Need more help and support?

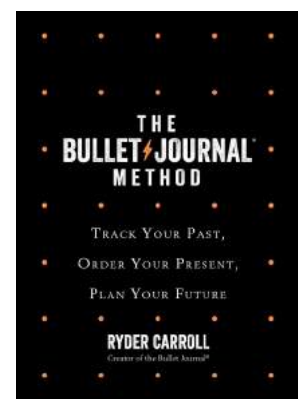
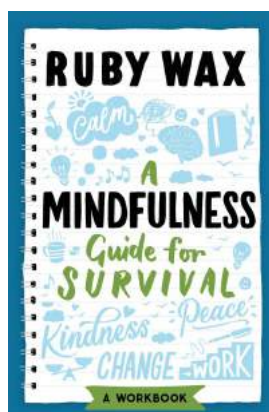
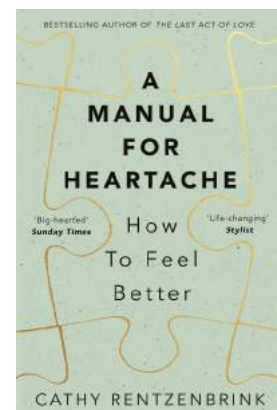
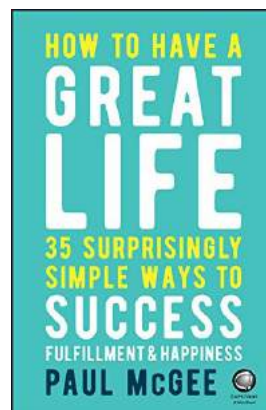
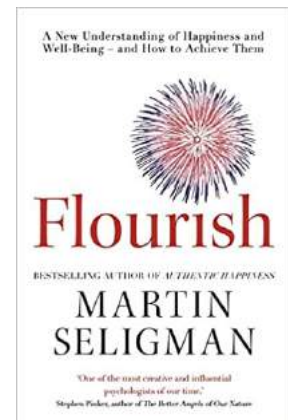
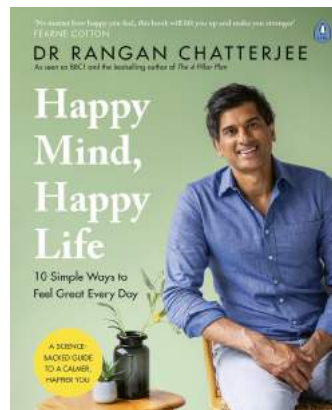
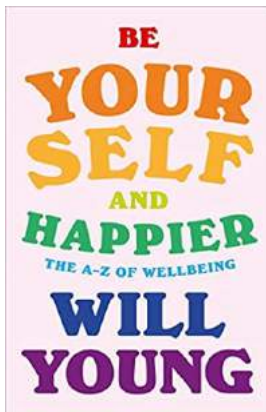
Want to better utilise the library services?

Keen to enhance your CPD?

The library offers a number of training courses designed to help you find evidence when you need it. If you would like any of these sessions delivered on an individual basis, to teams or larger groups of staff then we can arrange a session at a time and a place to suit you. Please click [here](#) for details of training on offer, or contact us on library@lthtr.nhs.uk to discuss your needs.

Mind feeling frazzled? Struggling to get back into the swing of things after the festive season?

Why not try giving some of our wellbeing and mindfulness collection a go to help get you in the right headspace for the year ahead.



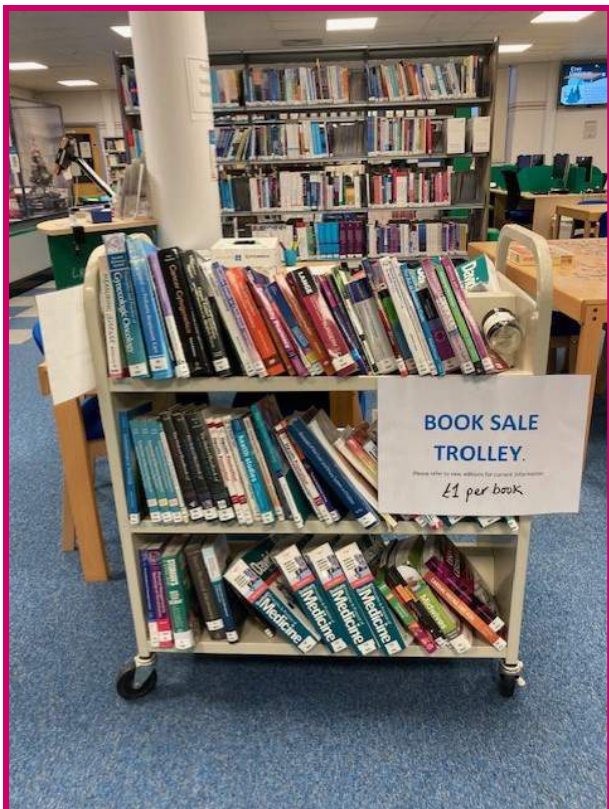
Want to view our full wellbeing collection? You can do so [here.](#)

Books up for grabs!

Due to getting new medical and fiction books we are having a clear out of current stock.

Old editions of medical books are available from inside the library at £1 per book and fiction books are available on the trolley outside RPH library for free!

Hurry whilst stocks last!



£1 book trolley



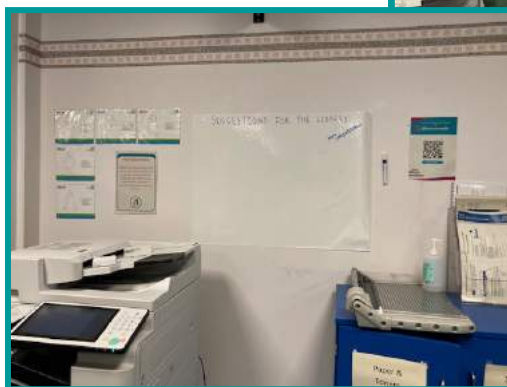
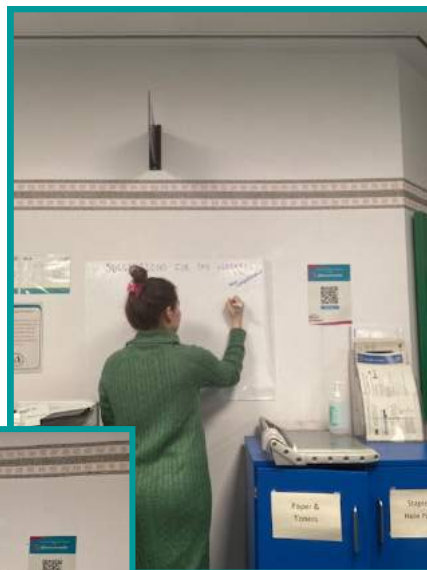
Free book trolley

Have your say!

Something you wish the library had or did?

Come and have you say in library at RPH!

We are looking for any feedback on ways to improve the library service. Come and leave your feedback on the whiteboard. We welcome all suggestions .



Your library service

Contact Us

Royal Preston Library
Centre 1
01772 522763
library.rph@lthtr.nhs.uk

Chorley Library
Centre 3
01257 245606



Follow us on @LancsHospLib

